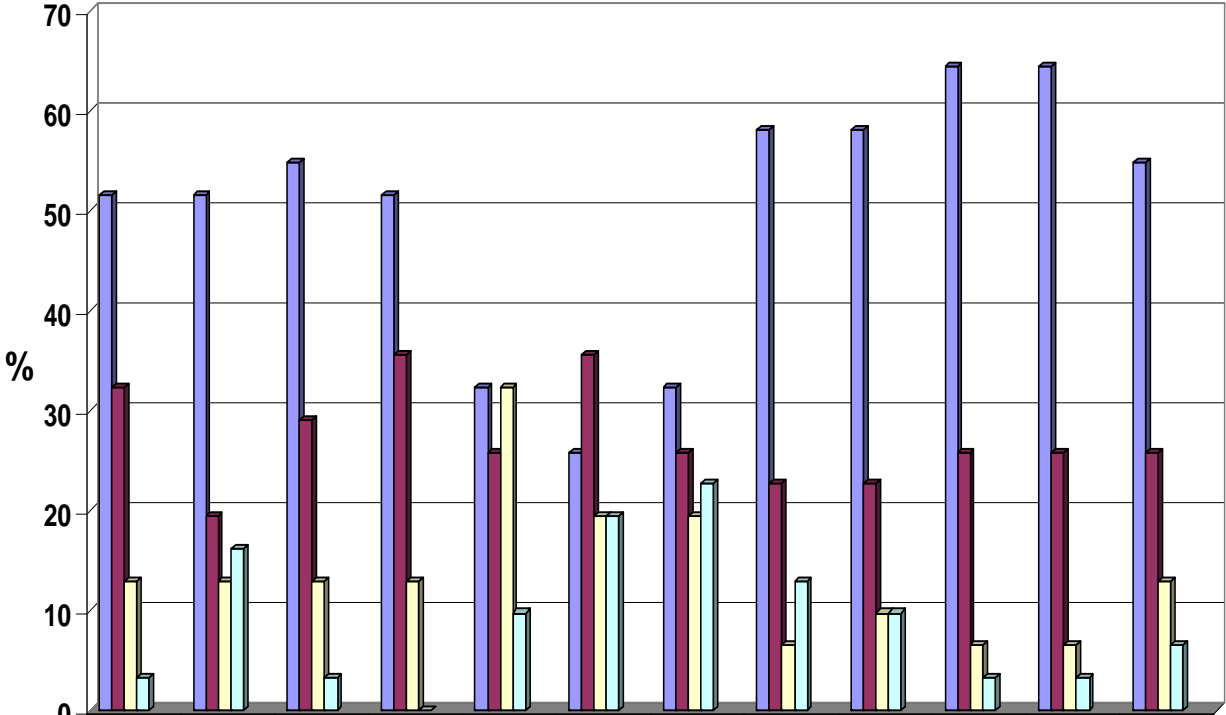


### 2006 Current MSA Student Survey: Quality of Learning (Public Administration)



To what extent is your program helping you improve your ability to:

	Apply mgt perspectives in your work	Use quantitative methods &	Evaluate workplace problems &	Take a position on an org'al issue, & defend	Apply the concepts of finance, as	Apply the concepts of marketing, as	Use information systems to	Engage in a career in public sector	Evaluate the political, social, and economic	Understand the public management	Analyze public policy	Apply organization theory &
■ Substantial Improvement	51.6	51.6	54.8	51.6	32.3	25.8	32.3	58.1	58.1	64.5	64.5	54.8
■ Moderate Improvement	32.3	19.4	29	35.5	25.8	35.5	25.8	22.6	22.6	25.8	25.8	25.8
□ Small Improvement	12.9	12.9	12.9	12.9	32.3	19.4	19.4	6.5	9.7	6.5	6.5	12.9
□ No Improvement	3.2	16.1	3.2	0	9.7	19.4	22.6	12.9	9.7	3.2	3.2	6.5
Mean	1.68	1.94	1.65	1.61	2.19	2.32	2.32	1.74	1.71	1.48	1.48	1.71
Standard Deviation	0.832	1.153	0.839	0.715	1.014	1.077	1.166	1.064	1.006	0.769	0.769	0.938

**Quality of Learning- Public Administration Concentration**

To what extent did your MSA program help you improve your ability to:

	Substantial Improvement		Moderate Improvement		Small Improvement		No Improvement		Missing	Valid Total
	Count	Valid %	Count	Valid %	Count	Valid %	Count	Valid %		
Apply management perspectives in your workplace	16	51.6	10	32.3	4	12.9	1	3.2	0	31
Use quantitative methods and approaches to solve workplace problems	16	51.6	6	19.4	4	12.9	5	16.1	0	31
Evaluate workplace problems and recommend strategies or tools to address them	17	54.8	9	29.0	4	12.9	1	3.2	0	31
Take a position on an organizational issue, and defend it both orally and in writing	16	51.6	11	35.5	4	12.9	0	0	0	31
Apply the concepts of finance, as practiced in your employer's organization.	10	32.3	8	25.8	10	32.3	3	9.7	0	31
Apply the concepts of marketing, as they relate to your employer's organization.	8	25.8	11	35.5	6	19.4	6	19.4	0	31
Use information systems to support decision-making	10	32.3	8	25.8	6	19.4	7	22.6	0	31
Engage in a career in public sector administration	18	58.1	7	22.6	2	6.5	4	12.9	0	31
Evaluate the political, social, and economic environments of public administration	18	58.1	7	22.6	3	9.7	3	9.7	0	31
Understand the public management process	20	64.5	8	25.8	2	6.5	1	3.2	0	31
Analyze public policy	20	64.5	8	25.8	2	6.5	1	3.2	0	31
Apply organization theory and behavior to practices in your organization	17	54.8	8	25.8	4	12.9	2	6.5	0	31

To what extent did your MSA program help you improve your ability to:	Stated "Substantial" or "Moderate" Improvement		Descriptive Statistics	
	Count	Valid %	Mean	Standard Deviation
Apply management perspectives in your workplace	26	83.9	1.68	0.832
Use quantitative methods and approaches to solve workplace problems	22	71.0	1.94	1.153
Evaluate workplace problems and recommend strategies or tools to address them	26	83.8	1.65	0.839
Take a position on an organizational issue, and defend it both orally and in writing	27	87.1	1.61	0.715
Apply the concepts of finance, as practiced in your employer's organization.	18	58.1	2.19	1.014
Apply the concepts of marketing, as they relate to your employer's organization.	19	61.3	2.32	1.077
Use information systems to support decision-making	18	58.1	2.32	1.166
Engage in a career in public sector administration	25	80.7	1.74	1.064
Evaluate the political, social, and economic environments of public administration	25	80.7	1.71	1.006
Understand the public management process	28	90.3	1.48	0.769
Analyze public policy	28	90.3	1.48	0.769
Apply organization theory and behavior to practices in your organization	25	80.6	1.71	0.938