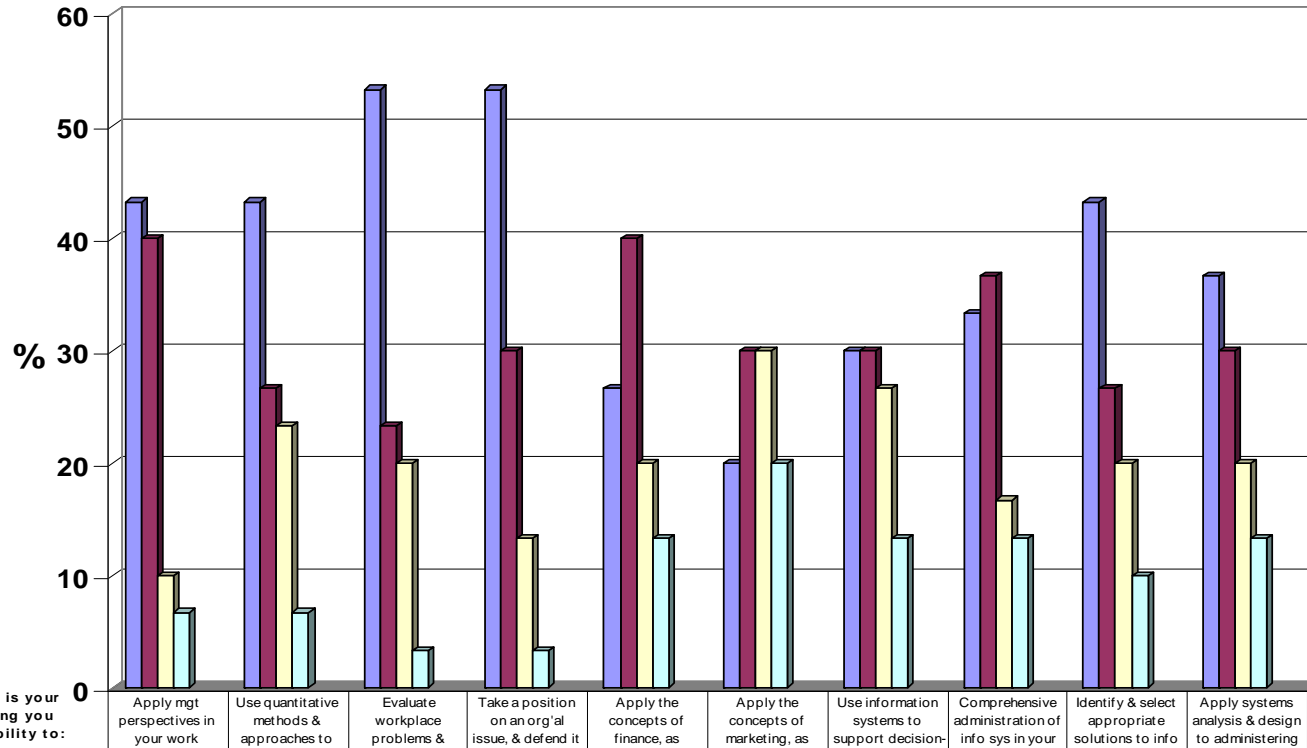


## 2006 Current MSA Student Survey: Quality of Learning (Information Resource Management)



Substantial Improvement	43.3	43.3	53.3	53.3	26.7	20	30	33.3	43.3	36.7
Moderate Improvement	40	26.7	23.3	30	40	30	30	36.7	26.7	30
Small Improvement	10	23.3	20	13.3	20	30	26.7	16.7	20	20
No Improvement	6.7	6.7	3.3	3.3	13.3	20	13.3	13.3	10	13.3
Mean	1.8	1.93	1.73	1.67	2.2	2.5	2.23	2.1	1.97	2.1
Standard Deviation	0.887	0.98	0.907	0.844	0.997	1.042	1.04	1.029	1.033	1.062

Quality of Learning- Information Resource Management Concentration To what extent did your MSA program help you improve your ability to:	Substantial Improvement		Moderate Improvement		Small Improvement		No Improvement		Missing	Valid Total
	Count	Valid %	Count	Valid %	Count	Valid %	Count	Valid %		
Apply management perspectives in your workplace	13	43.3	12	40.0	3	10.0	2	6.7	4	34
Use quantitative methods and approaches to solve workplace problems	13	43.3	8	26.7	7	23.3	2	6.7	4	34
Evaluate workplace problems and recommend strategies or tools to address them	16	53.3	7	23.3	6	20.0	1	3.3	4	34
Take a position on an organizational issue, and defend it both orally and in writing	16	53.3	9	30.0	4	13.3	1	3.3	4	34
Apply the concepts of finance, as practiced in your employer's organization.	8	26.7	12	40.0	6	20.0	4	13.3	4	34
Apply the concepts of marketing, as they relate to your employer's organization.	6	20.0	9	30.0	9	30.0	17.6	20.0	4	34
Use information systems to support decision-making	9	30.0	9	30.0	8	26.7	4	13.3	4	34
Comprehensive administration of information systems in your organization	10	33.3	11	36.7	5	16.7	4	13.3	4	34
Identify and select appropriate solutions to information administration in your organization	13	43.3	8	26.7	6	20.0	3	10.0	4	34
Apply systems analysis and design to administering information in your organization	11	36.7	9	30.0	6	20.0	4	13.3	4	34

To what extent did your MSA program help you improve your ability to:	Stated "Substantial" or "Moderate" Improvement		Descriptive Statistics	
	Count	Valid %	Mean	Standard Deviation
Apply management perspectives in your workplace	25	83.3	1.80	0.887
Use quantitative methods and approaches to solve workplace problems	21	70.0	1.93	0.980
Evaluate workplace problems and recommend strategies or tools to address them	23	76.6	1.73	0.907
Take a position on an organizational issue, and defend it both orally and in writing	25	83.3	1.67	0.844
Apply the concepts of finance, as practiced in your employer's organization.	20	66.7	2.20	0.997
Apply the concepts of marketing, as they relate to your employer's organization.	15	50.0	2.50	1.042
Use information systems to support decision-making	18	60.0	2.23	1.040
Comprehensive administration of information systems in your organization	21	70.0	2.10	1.029
Identify and select appropriate solutions to information administration in your organization	21	70.0	1.97	1.033
Apply systems analysis and design to administering information in your organization	20	66.7	2.10	1.062