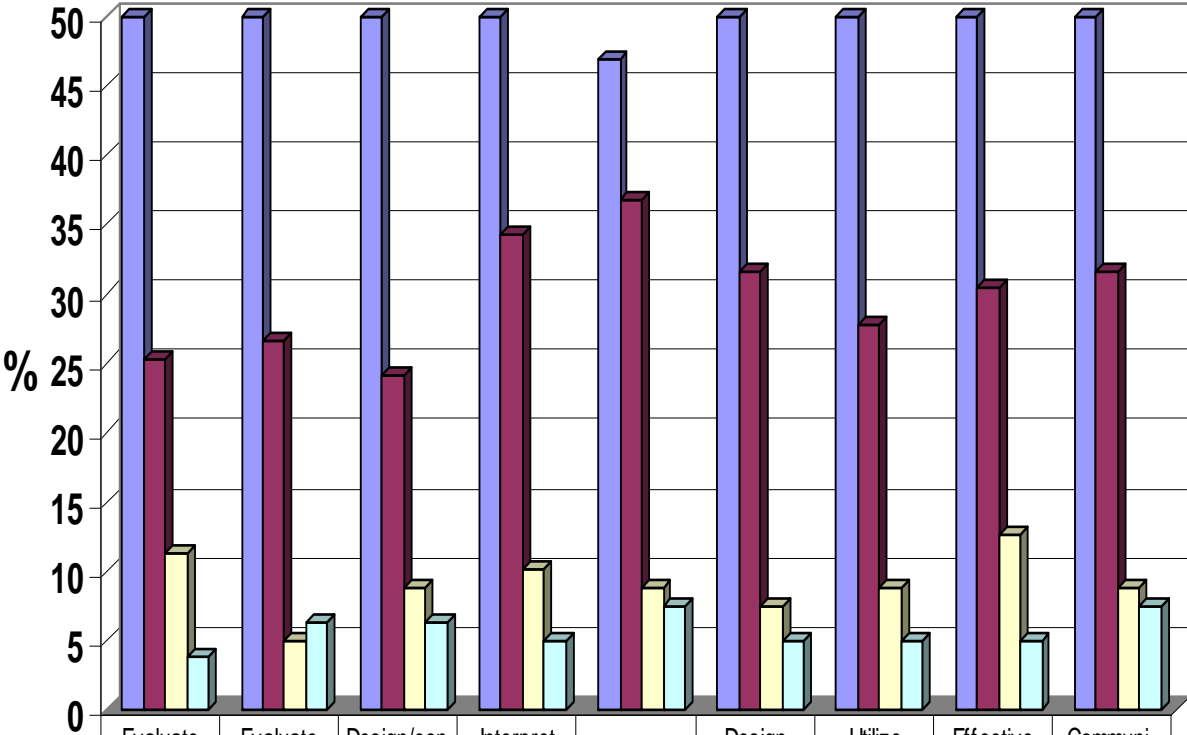


2006 Current MA in Education: Overall Quality of Learning



To what extent is your program helping you improve your ability to:

	Evaluate current issues and	Evaluate current research	Design/conduct a study	Interpret and apply findings	Design curriculum	Design learning strategies	Utilize educational technology	Effective written communication	Communicate verbally
■ Substantial Improvement	58	62	60.8	50.6	46.8	55.7	58.2	51.9	51.9
■ Moderate Improvement	25.3	26.6	24.1	34.2	36.7	31.6	27.8	30.4	31.6
■ Small Improvement	11.4	5.1	8.9	10.1	8.9	7.6	8.9	12.7	8.9
■ No Improvement	3.8	6.3	6.3	5.1	7.6	5.1	5.1	5.1	7.6

Quality of Learning- MA in Ed Overall

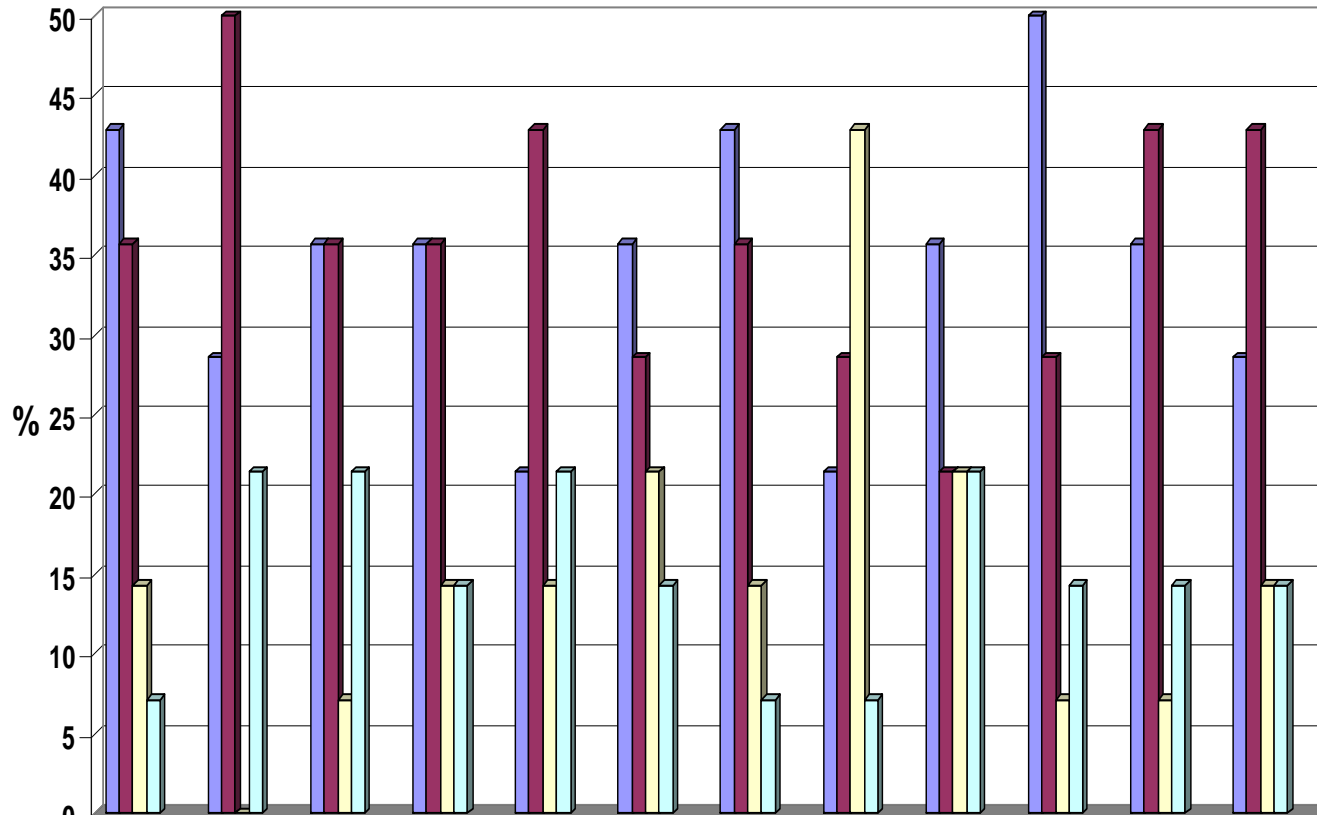
To what extent did your MA in Education program help you improve your ability to:

	Great Improvement		Moderate Improvement		Small Improvement		No Improvement		Missing	Valid Total
	Count	Valid %	Count	Valid %	Count	Valid %	Count	Valid %		
Evaluate current issues and trends influencing the field of education.	84	53.5	50	31.8	18	11.5	5	3.2	6	157
Evaluate current research in the field of education.	88	56.1	52	33.1	10	6.4	7	4.5	6	157
Design and conduct a study of an issue or problem in the field of education.	85	54.1	48	30.6	17	10.8	7	4.5	6	157
Interpret and apply findings of the study to the problem or issue.	76	48.4	55	35.0	20	12.7	6	3.8	6	157
Design curriculum that reflects accepted teaching and learning theory.	68	43.3	65	41.4	15	9.6	9	5.7	6	157
Design learning strategies that reflect accepted teaching and learning theory.	82	52.2	56	35.7	14	8.9	5	3.2	6	157
Utilize educational technologies that enhance student learning.	77	49.0	53	33.8	20	12.7	7	4.5	6	157
Communicate effectively in writing to the intended target audience.	73	46.5	59	37.6	20	12.7	5	3.2	6	157
Communicate verbally in an effective way to diverse audiences.	73	46.5	56	35.7	20	12.7	8	5.1	6	157

To what extent did your MA in Education program help you improve your ability to:

	Stated "Substantial" or "Moderate" Improvement		Descriptive Statistics	
	Count	Valid %	Mean	Standard Deviation
Evaluate current issues and trends influencing the field of education.	134	85.3	1.64	0.809
Evaluate current research in the field of education.	140	89.2	1.59	0.800
Design and conduct a study of an issue or problem in the field of education.	133	84.7	1.66	0.845
Interpret and apply findings of the study to the problem or issue.	131	83.4	1.72	0.831
Design curriculum that reflects accepted teaching and learning theory.	133	84.7	1.78	0.844
Design learning strategies that reflect accepted teaching and learning theory.	138	87.9	1.63	0.779
Utilize educational technologies that enhance student learning.	130	82.8	1.73	0.852
Communicate effectively in writing to the intended target audience.	132	84.1	1.73	0.806
Communicate verbally in an effective way to diverse audiences.	129	82.1	1.76	0.863

2006 Current MA in Education: Quality of Learning (Guidance & Development)



To what extent is your program helping you improve your ability to:

	Evaluate current issues and trends	Evaluate current research in the	Design and conduct a study of an issue or	Interpret and apply findings of the study to the	Design curriculum that reflects	Design learning strategies that reflect accepted	Utilize educational technologies	Communicate effectively in writing to the	Communicate verbally in an effective way to	Understand theoretical approaches to	Select and apply appropriate approaches to	Develop lifelong habits of self-
Substantial Improvement	42.9	28.6	35.7	35.7	21.4	35.7	42.9	21.4	35.7	50	35.7	28.6
Moderate Improvement	35.7	50	35.7	35.7	42.9	28.6	35.7	28.6	21.4	28.6	42.9	42.9
Small Improvement	14.3	0	7.1	14.3	14.3	21.4	14.3	42.9	21.4	7.1	7.1	14.3
No Improvement	7.1	21.4	21.4	14.3	21.4	14.3	7.1	7.1	21.4	14.3	14.3	14.3
Mean	186	2.14	2.14	2.07	2.36	2.14	186	2.36	2.29	186	2	2.14
Standard Deviation	0.949	10.99	1.67	10.72	10.82	10.99	0.949	0.929	1.204	10.99	10.38	10.27

Quality of Learning- Guidance and Development Concentration

To what extent did your MA in Education program help you improve your ability to::

	Great Improvement		Moderate Improvement		Small Improvement		No Improvement		Missing	Valid Total
	Count	Valid %	Count	Valid %	Count	Valid %	Count	Valid %		
Evaluate current issues and trends influencing the field of education.	6	42.9	5	35.7	2	14.3	1	7.1	0	14
Evaluate current research in the field of education.	4	28.6	7	50.0	0	0	3	21.4	0	14
Design and conduct a study of an issue or problem in the field of education.	5	35.7	5	35.7	1	7.1	3	21.4	0	14
Interpret and apply findings of the study to the problem or issue.	5	35.7	5	35.7	2	14.3	2	14.3	0	14
Design curriculum that reflects accepted teaching and learning theory.	3	21.4	6	42.9	2	14.3	3	21.4	0	14
Design learning strategies that reflect accepted teaching and learning theory.	5	35.7	4	28.6	3	21.4	2	14.3	0	14
Utilize educational technologies that enhance student learning.	6	42.9	5	35.7	2	14.3	1	7.1	0	14
Communicate effectively in writing to the intended target audience.	3	21.4	4	28.6	6	42.9	1	7.1	0	14
Communicate verbally in an effective way to diverse audiences.	5	35.7	3	21.4	3	21.4	3	21.4	0	14
Understand theoretical approaches to working with people in different settings.	7	50.0	4	28.6	1	7.1	2	14.3	0	14
Select and apply appropriate approaches to working with individuals in their workplace.	5	35.7	6	42.9	1	7.1	2	14.3	0	14
Develop lifelong habits of self-improvement as a professional and a human being.	4	28.6	6	42.9	2	14.3	2	14.3	0	14

To what extent did your MA in Education program help you improve your ability to:

	Stated "Substantial" or "Moderate" Improvement		Descriptive Statistics	
	Count	Valid %	Mean	Standard Deviation
Evaluate current issues and trends influencing the field of education.	11	78.6	1.86	0.949
Evaluate current research in the field of education.	11	78.6	2.14	1.099
Design and conduct a study of an issue or problem in the field of education.	10	71.4	2.14	1.167
Interpret and apply findings of the study to the problem or issue.	10	71.4	2.07	1.072
Design curriculum that reflects accepted teaching and learning theory.	9	64.3	2.36	1.082
Design learning strategies that reflect accepted teaching and learning theory.	9	64.3	2.14	1.099
Utilize educational technologies that enhance student learning.	11	78.6	1.86	0.949
Communicate effectively in writing to the intended target audience.	7	50	2.36	0.929
Communicate verbally in an effective way to diverse audiences.	8	57.1	2.29	1.204
Understand theoretical approaches to working with people in different settings.	11	78.6	1.86	1.099
Select and apply appropriate approaches to working with individuals in their workplace.	11	78.6	2.00	1.038
Develop lifelong habits of self-improvement as a professional and a human being.	10	71.4	2.14	1.027